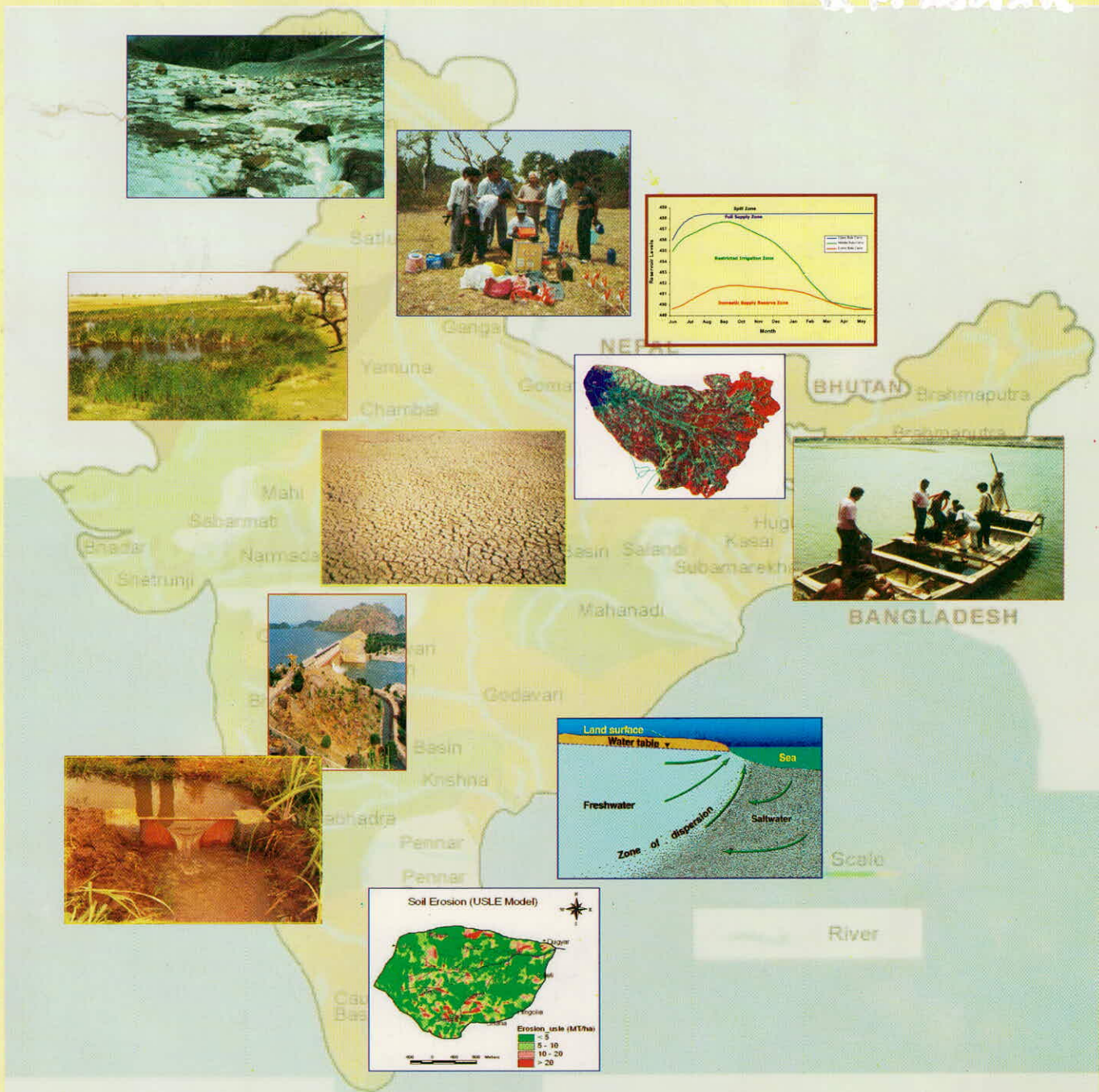


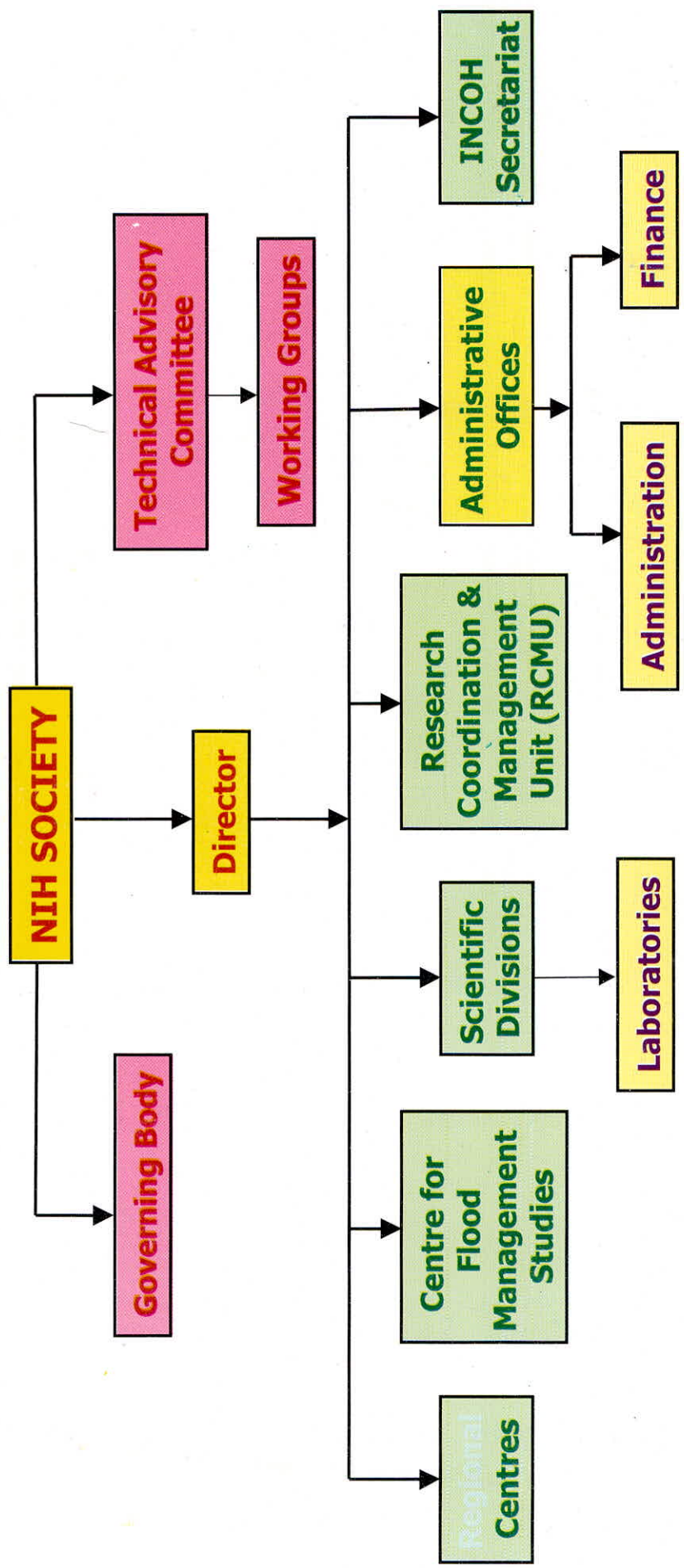
Implementable Technologies for Water Resources Development

S. P. SINGH



National Institute of Hydrology
Roorkee - 247667

ORGANISATIONAL STRUCTURE



- Scientific Divisions**
- Agricultural Hydrology
 - Environmental Hydrology
 - Ground Water Hydrology
 - Hydrological Investigations
 - Surface Water Hydrology
 - Water Resources Systems

- Regional Centres & Centres For Flood Management Studies**
- Centre for Flood Management Studies (Brahmaputra Basin), Guwahati
 - Centre for Flood Management Studies (Ganga Basin), Patna
 - Deccan Hard Rock Regional Centre, Belgaum
 - Deltaic Regional Centre, Kakinada
 - Ganga Plains Regional Centre, Sagor
 - Western Himalayan Regional Centre, Jammu

Implementable Technologies for Water Resources Development



National Institute of Hydrology

Roorkee – 247667

September 2004

CONTENTS

S. No.	TITLE	Page
1.	Assessment of flood in gauged and ungauged catchments	1
2.	Assessment of spring flow	5
3.	Assessment of soil erosion	7
4.	Design of radial collector well	9
5.	Estimation of groundwater recharge	13
6.	Estimation of irrigation return flow	17
7.	Expected life of water bodies	21
8.	Flood estimation using Unit Hydrograph	23
9.	Geomorphological Instantaneous Unit Hydrograph (GIUH)	27
10.	Groundwater salinity in coastal aquifers	29
11.	Hydropower potential in the Himalayan region	33
12.	Identification of pollution sources in groundwater	37
13.	Managing waterlogging and drainage congestion	41
14.	Non-point source pollution	45
15.	Predictions in ungauged basins	49
16.	Recharge zones and sources to deeper aquifers	51
17.	Reservoir operation	53
18.	Reservoir sedimentation	55
19.	Resistivity method for estimating groundwater recharge	57
20.	Simulated flows in Himalayan rivers	61
21.	Vertical component of groundwater recharge	65
22.	Water management in irrigation command areas	69
23.	Water quality modelling	73
24.	Weighing rain gauge	77
25.	Weighing snow gauge	79