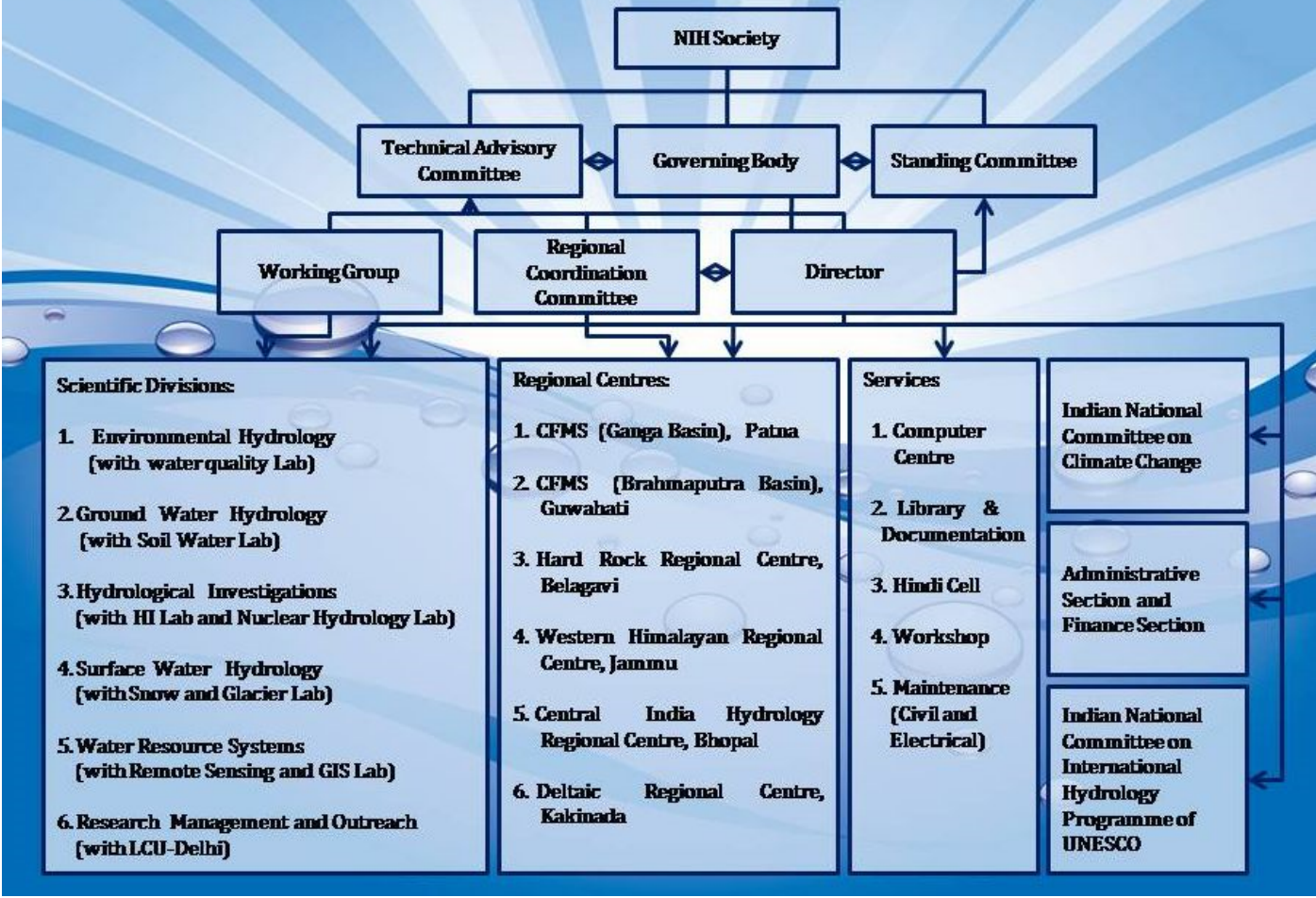


ORGANOGRAM OF NATIONAL INSTITUTE OF HYDROLOGY, ROORKEE



Scientific Divisions:

1. Environmental Hydrology (with water quality Lab)
2. Ground Water Hydrology (with Soil Water Lab)
3. Hydrological Investigations (with HI Lab and Nuclear Hydrology Lab)
4. Surface Water Hydrology (with Snow and Glacier Lab)
5. Water Resource Systems (with Remote Sensing and GIS Lab)
6. Research Management and Outreach (with LCU-Delhi)

Regional Centres:

1. CFMS (Ganga Basin), Patna
2. CFMS (Brahmaputra Basin), Guwahati
3. Hard Rock Regional Centre, Belagavi
4. Western Himalayan Regional Centre, Jammu
5. Central India Hydrology Regional Centre, Bhopal
6. Deltaic Regional Centre, Kakinada

Services

1. Computer Centre
2. Library & Documentation
3. Hindi Cell
4. Workshop
5. Maintenance (Civil and Electrical)

Indian National Committee on Climate Change

Administrative Section and Finance Section

Indian National Committee on International Hydrology Programme of UNESCO