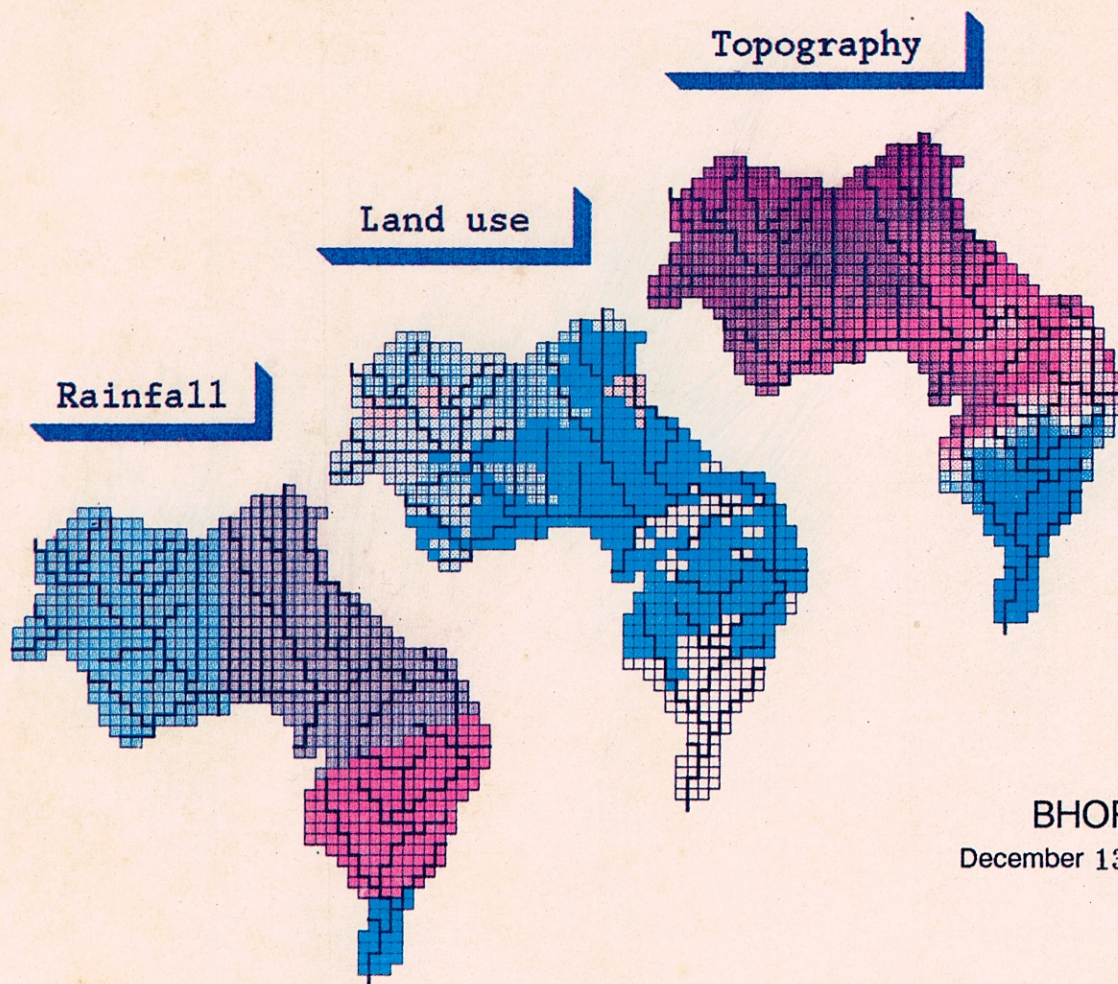


Workshop on

APPLICATION OF SHE MODEL TO SUBBASINS OF RIVER NARMADA



BHOPAL
December 13-16, 1989

Organised by National Institute of Hydrology

with cooperation of

Madhya Pradesh Irrigation Department

NATIONAL INSTITUTE
OF HYDROLOGY

ROORKEE, INDIA

Danish Hydraulic Institute

NERC WATER RESOURCE SYSTEMS RESEARCH UNIT
UNIVERSITY OF NEWCASTLE UPON TYNE, UK

SOGREAH, France

PROJECT ALA 86/19

GOVERNMENT OF INDIA

COMMISSION OF THE EUROPEAN COMMUNITIES

W O R K S H O P O N

'APPLICATION OF **SHE** MODEL TO SUB-BASINS OF RIVER NARMADA'

BHOPAL (M.P.)

13-16 December 1989

Organised by:

NATIONAL INSTITUTE OF HYDROLOGY

ROORKEE (U.P.)

With cooperation of:

MADHYA PRADESH IRRIGATION DEPARTMENT

National Institute of
Hydrology, Roorkee,
India

Danish Hydraulic Institute, Denmark

NERC Water Resources Systems
Research Unit, University of
Newcastle Upon Tyne, U.K.

SOGREAH, France

W O R K S H O P O N
'APPLICATION OF **SHE** MODEL TO SUB-BASINS OF RIVER NARMADA'
BHOPAL (M.P.)
13-16 DECEMBER 1989

CONTENTS	Page No.
PREFACE	
<u>PART I</u>	
1. INTRODUCTION TO THE PROJECT Dr. S M Seth, Project Coordinator, NIH	1
2. INTRODUCTION TO HYDROLOGICAL MODELLING Mr. B Storm, Consultant	4
1. Introduction	4
2. Definitions	4
2.1 Mathematical models	4
3. Classification of Hydrological Models	6
3.1 Black box or empirical models	8
3.2 Lumped conceptual models	9
3.3 Fully distributed, physically based models	10
4. Selection of Appropriate Model Type	11
5. References	14
3. INTRODUCTION TO THE SHE by Consultant Staff	16
Introduction	16
Raison D'etre of the SHE	16
Historical Development of the SHE	18
Initial development	18
Model development	19
The contemporary setting	20
Philosophy of Application of a Physically Distributed Model	22
Data provision	22
Model operation	24
Fields of application	25
Conclusions	27
Acknowledgements	28
References	28

4.	REPRESENTATION OF HYDROLOGICAL PROCESSES IN THE SHE Dr. J C Bathurst, Consultant	30
4.1	Interception and Evapotranspiration	30
1.	Interception	30
1.1	Process of interception	30
1.2	Factors affecting interception	31
1.3	SHE interception model	31
1.4	Limitations of the interception model	32
2.	Evapotranspiration	33
2.1	Process of evapotranspiration	33
2.2	Factors affecting evapotranspiration	34
2.3	SHE evapotranspiration model	38
2.4	Limitations of the evapotranspiration model	40
3.	Data Assembly for the Narmada Test Basins	41
4.	References	44
4.2	Subsurface Flow Mr. B Storm, Consultant	45
1.	Subsurface flow	45
1.1	Introduction	45
2.	The soil water zone	46
2.1	Unsaturated flow	46
2.2	Soil physical properties	47
2.3	Numerical solution	48
3.	The groundwater zone	50
3.1	Flow in the saturated zone	50
4.	Subsurface flow in the SHE	50
4.3	Overland and Channel Flow Dr. J C Bathurst, Consultant	52
1.	Overland and channel flow	52
1.1	Processes of overland flow	52
1.2	Factors affecting overland flow	54
1.3	Processes of channel flow	54
1.4	Factors affecting channel flow	55
1.5	SHE overland and channel flow model	56
1.6	Limitations of the overland and channel flow model	57

2.	Data Assembly for the Naramda Test Basins	59
4.4	Snowmelt Dr. J C Bathurst, Consultant	61
1.	Snowmelt	61
1.1	Processes of snowmelt and snowpack evolution	61
1.2	Factors affecting snowmelt	62
1.3	SHE snowmelt model	64
1.4	Limitations of the snowmelt model	65
2.	Data Assembly	66
5.	DATA ACQUISITION AND PROCESSING Mr. B Storm, Consultant	67
1.	Introduction	67
2.	Data Requirements of the SHE	68
3.	Data Handling Procedures	69
 <u>PART II</u>		
6.	APPLICATION OF SHE TO NARMADA FOCUS BASINS	72
6.1	Introduction Dr. S M Seth, Project Coordinator, NIH	72
6.2	Experience with Data Collection Dr. S M Seth, Project Coordinator, NIH	74
1.	Data requirement	74
2.	Data collected	76
6.3	Application to Kolar Basin Mr. S K Jain, Scientist 'C', NIH	80
1.	General description of Kolar river basin	80
2.	Hydrology of Kolar basin	80
3.	Data availability and processing	81
4.	SHE setup for Kolar basin	83
5.	Calibration of SHE for Kolar basin	84
6.	Validation of model	86
7.	Sensitivity analysis	87
8.	Conclusions	92

6.4	Application to Barna Basin	107
	Mr. R D Singh, Scientist 'C', NIH	
1.	General description of Barna river basin	107
2.	Hydrology of Barna river basin	107
3.	Data availability and processing	110
4.	Setup for Barna basin	113
5.	Calibration of SHE for Barna basin	114
6.	Validation of model	117
7.	Sensitivity analysis	118
8.	Conclusions	121
6.5	Application to Sher Basin	136
	Mr. V K Lohani, Scientist 'C', NIH	
1.	General Description of Sher basin	136
2.	Data availability	137
3.	Data processing	139
4.	Model setup	140
5.	Calibration of SHE	141
6.	Validation of model	142
7.	Sensitivity analysis	142
8.	Conclusions and limitations	144