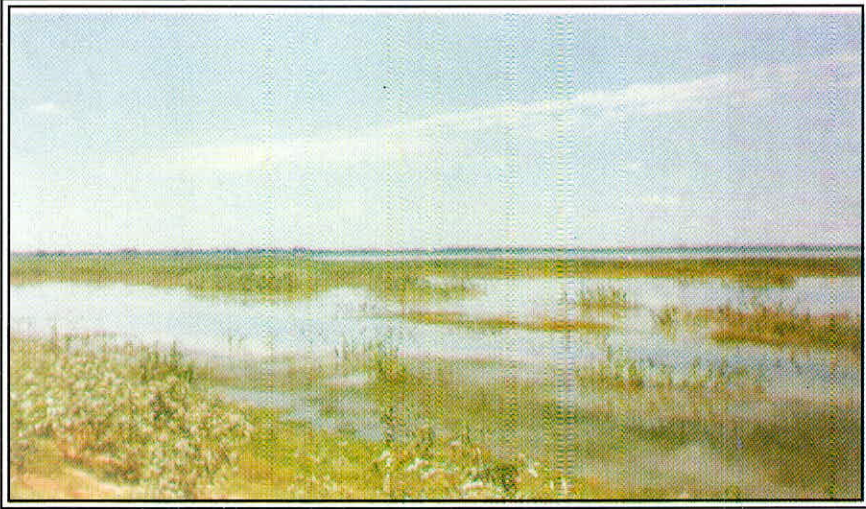


**Himayatsagar and Osmansagar Lakes Catchment Areas with Geological Formations ( Page 13 )**





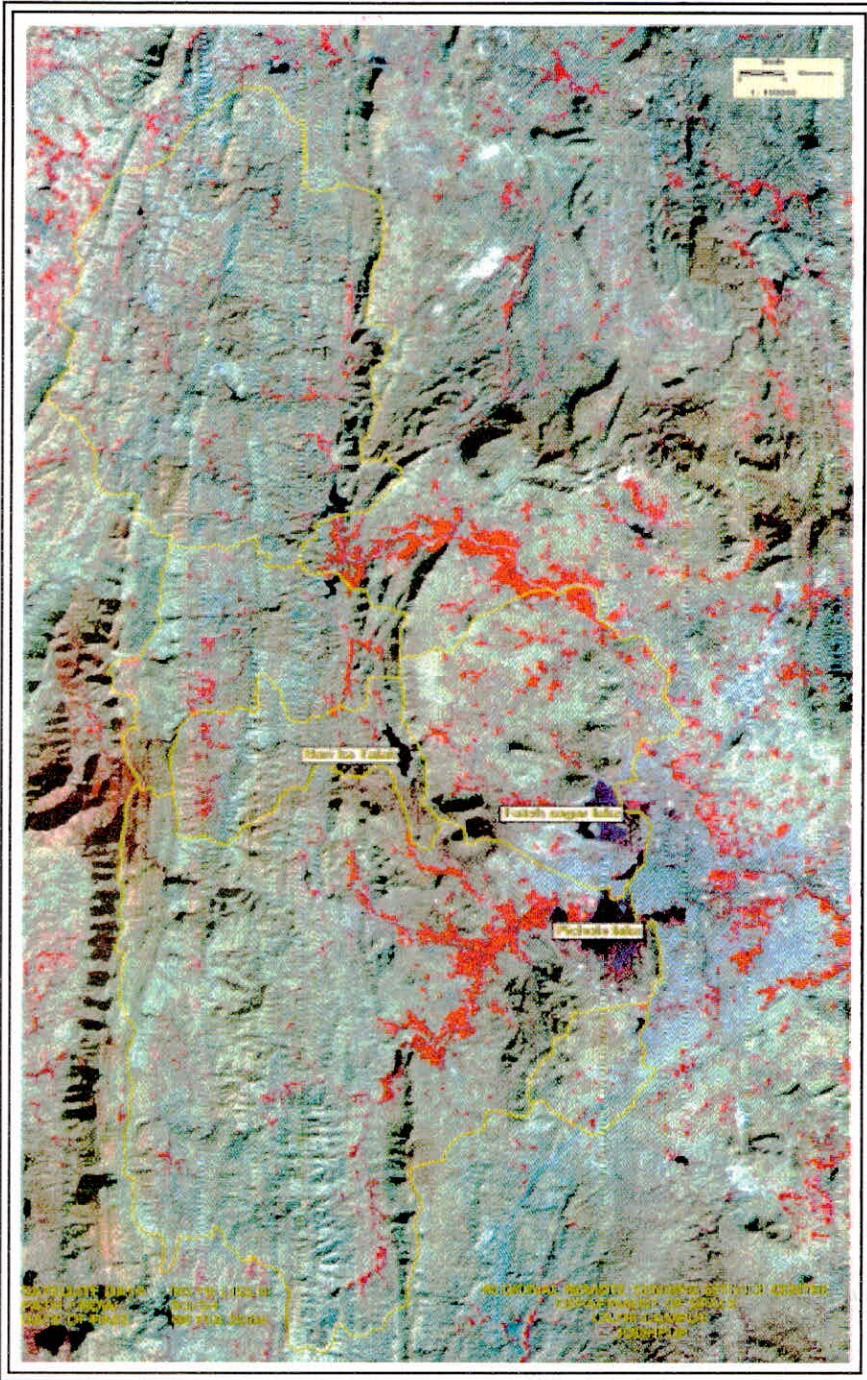
**The Rampant Spread of *Ipomoea Sp.in* Oussudu Lake, Pondicherry  
(Page 127 )**



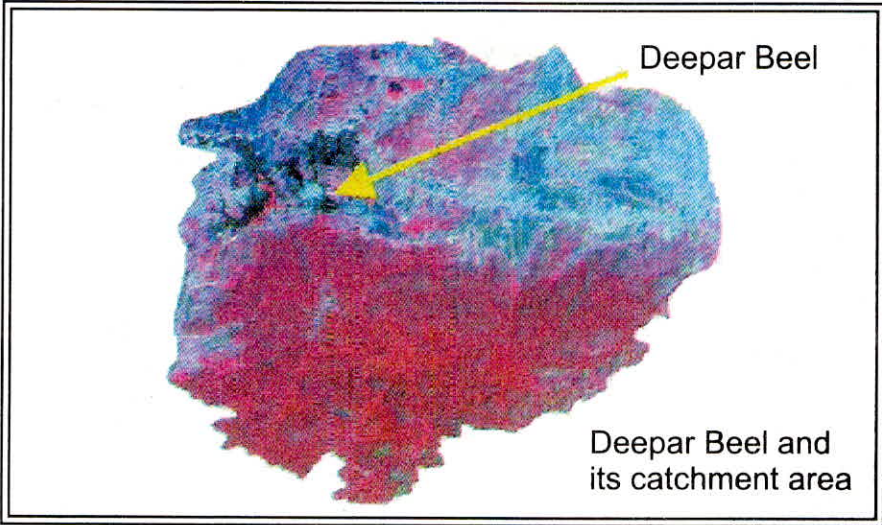
**Photographic view of Dr. Salim Ali Lake. ( Page 330 )**



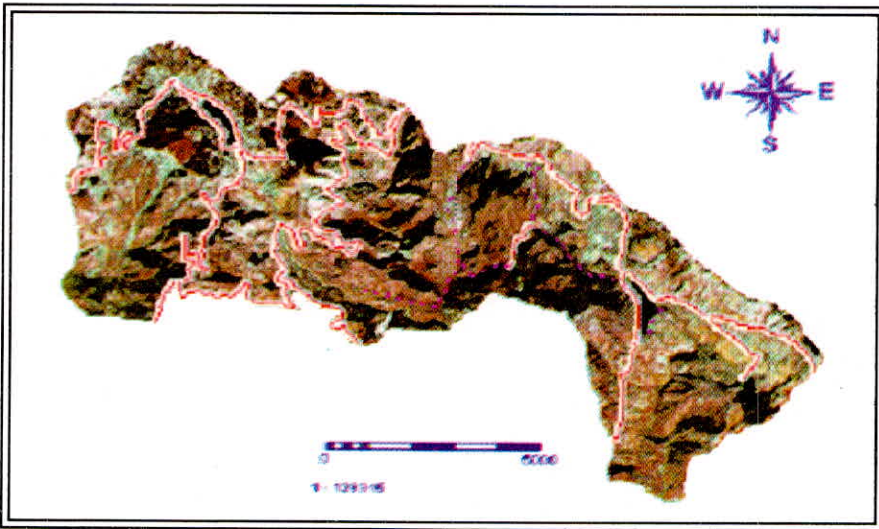
UDAIPUR LAKES REGION - 2004  
IRS P6 LISS III, False Color Compiste (FCC)



Udaipur Lakes Region ( Page 148 )

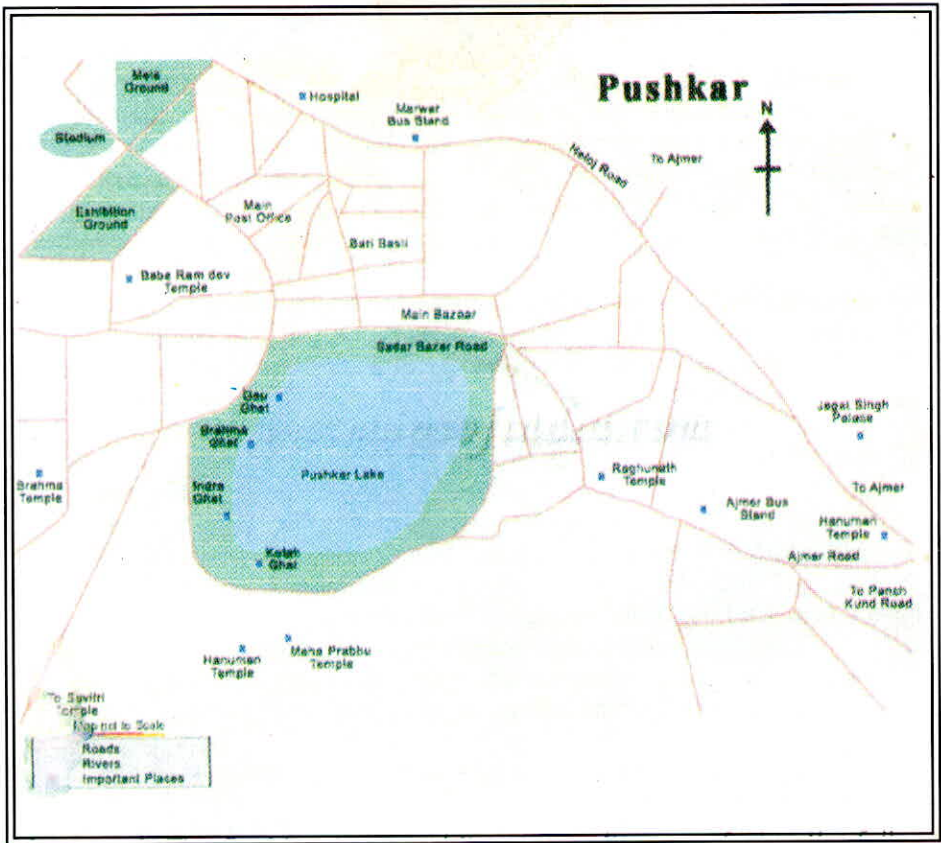


**Deepar Beel, Guwahati and its Catchment Area ( Page 217)**



**Digital view of the Catchment Area of Nainital Lakes ( Page 232 )**





**Pushkar Lake Ajmer - A Location Map ( Page 274 )**



**Pichhola Lake, Udaipur ( Page 350 )**



**Lack of Vegetation in Lake Pichhola, Udaipur ( Page 350 )**





**Dry Condition of Pichhola in April 2005 ( Page 350 )**



**Heavy Sediment Load Coming into Pichhola ( Page 351 )**